

No One But You (Only The Good Die Young)

10

Music & Lyrics by Brian May

Vocal Arr. by Brian May & Mike Dixon
Orch. by Queen & Stuart Morley

GALILEO: "What King?"

BUDDY: "Little is known about him except that his name was Pelvis. A poor boy from nowhere, who sang like an angel and danced like the devil. A teenage truck driver who broke free to become a mighty rebel, a rebel who spawned a thousand rebels."

MADONNA: "But he was too wild, too free. So they took him and they cut off his hair and they put him in the army."

TINA: "Then they humiliated him. The King was forced to make foolish movies singing nursery rhymes to gangs of grinning children."

BOY GEORGE: "It broke his spirit. He took refuge in drugs and pills and cheeseburgers."

AC/DC: "Like a million kids that followed. The king was dead."

BUDDY: "And many kings and heroes died thereafter. The songs have been lost, but their names live on. We remember those that died young, Jimi Hendrix. Kurt Cobain."

TINA: "Jim Morrison."

AC/DC: "Janice Joplin."

WHITE SNAKE: "Kurt Cobain."

MADONNA: "Amy Winehouse."

TINA: "Marvin Gaye, Whitney Houston, Bob Marley."

BUDDY: "John Lennon."

OZ: "Freddie..."

Plaintive Swing $\text{♩} = 110$

6 7 3 8

1-6 7-13 14-16 19-26

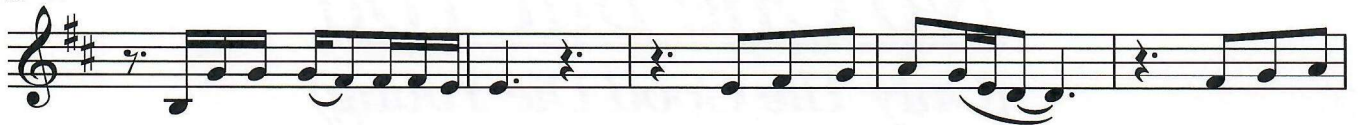
27 Oz

A hand a-bove the wa-ter_ An an-gel reach-ing for the sky Is it rain-ing in

32

Heav-en?_ Do you want us to cry? And ev-ry-where the bro-kenheart-ed

37



on ev-'ry lone- ly av-e- nue No-one could reach them___ No-one but

42



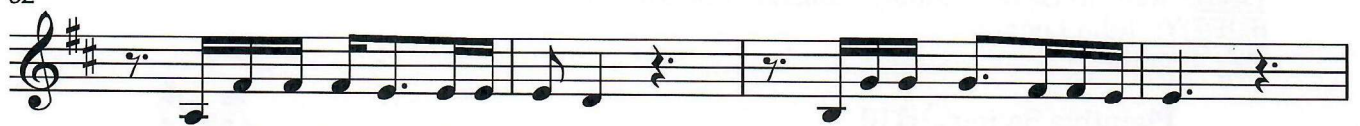
you. One by one, on-ly the good die young They're on-ly

47



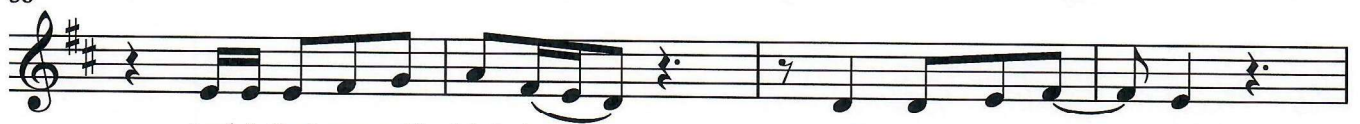
fly-ing too close to the sun, and life goes on___ with-out you__

52



A-noth-er trick-y sit-u - a - tion I get to drown-ing in the blues

56



And I find my-self think-ing___ well, what would you___ do?

60

Musical notation for measures 60-67, including a grand staff with treble and bass clefs. The key signature is natural (C major). The melody is in the treble clef, and the bass line is in the bass clef. There are 'Ooo' vocalizations in the treble clef. The notation includes quarter, eighth, and sixteenth notes.

Yes, it was such an op-er - a - tion for-ev-er pay-ing ev-'ry due

Ooo

Ooo